

Concrete Summit
on
Sustainable Development

Washington, DC
March 30, 2007

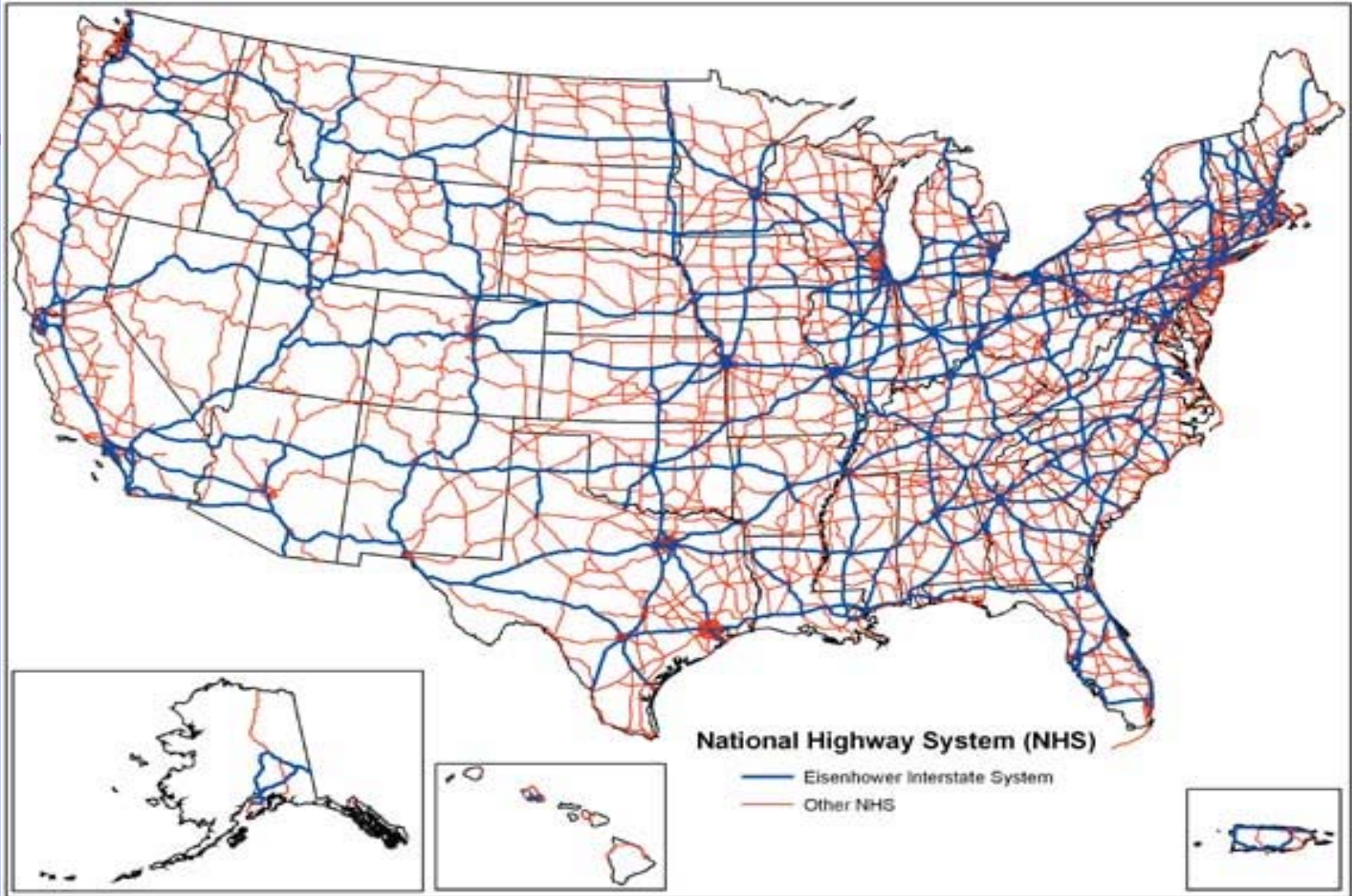
King W. Gee
Associate Administrator for Infrastructure
Federal Highway Administration



U.S. Department of Transportation
Federal Highway Administration



Eisenhower Interstate Highway System



U.S. Department of Transportation
Federal Highway Administration



Concrete Summit on Sustainable Development



U.S. Department of Transportation
Federal Highway Administration



Concrete Summit on Sustainable Development



U.S. Department of Transportation
Federal Highway Administration



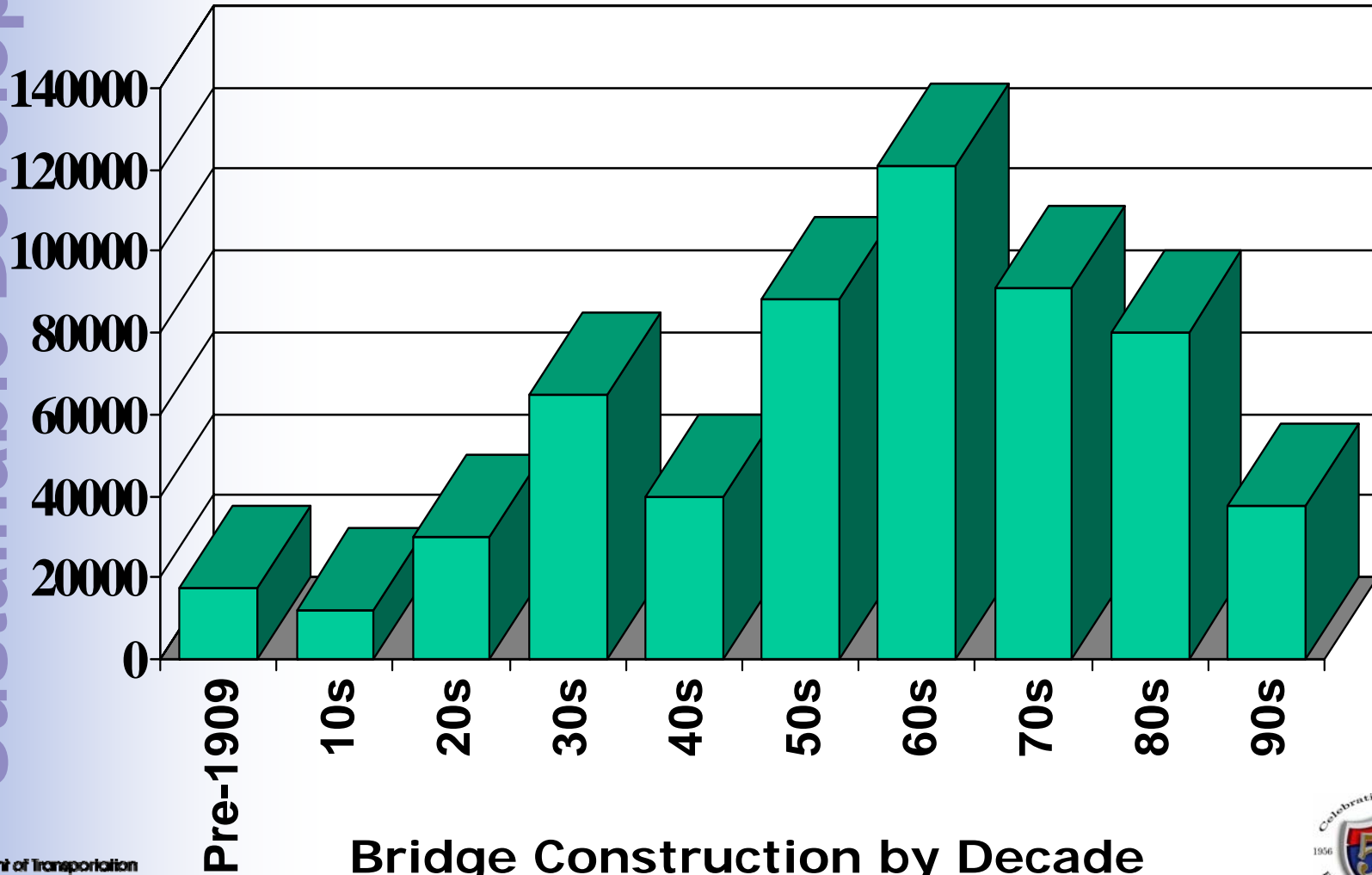
Concrete Summit on Sustainable Development



U.S. Department of Transportation
Federal Highway Administration



Aging Infrastructure

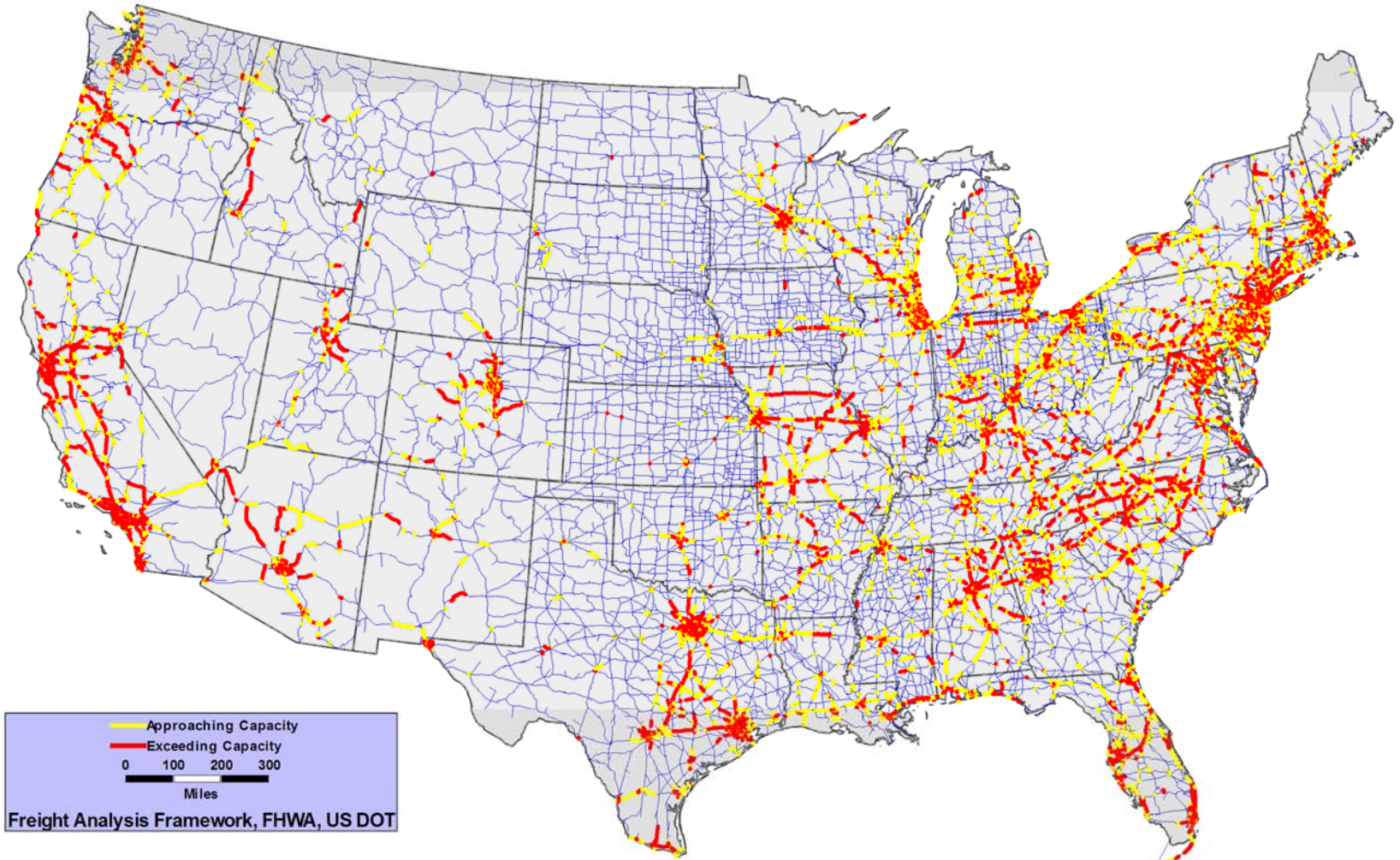


Bridge Construction by Decade

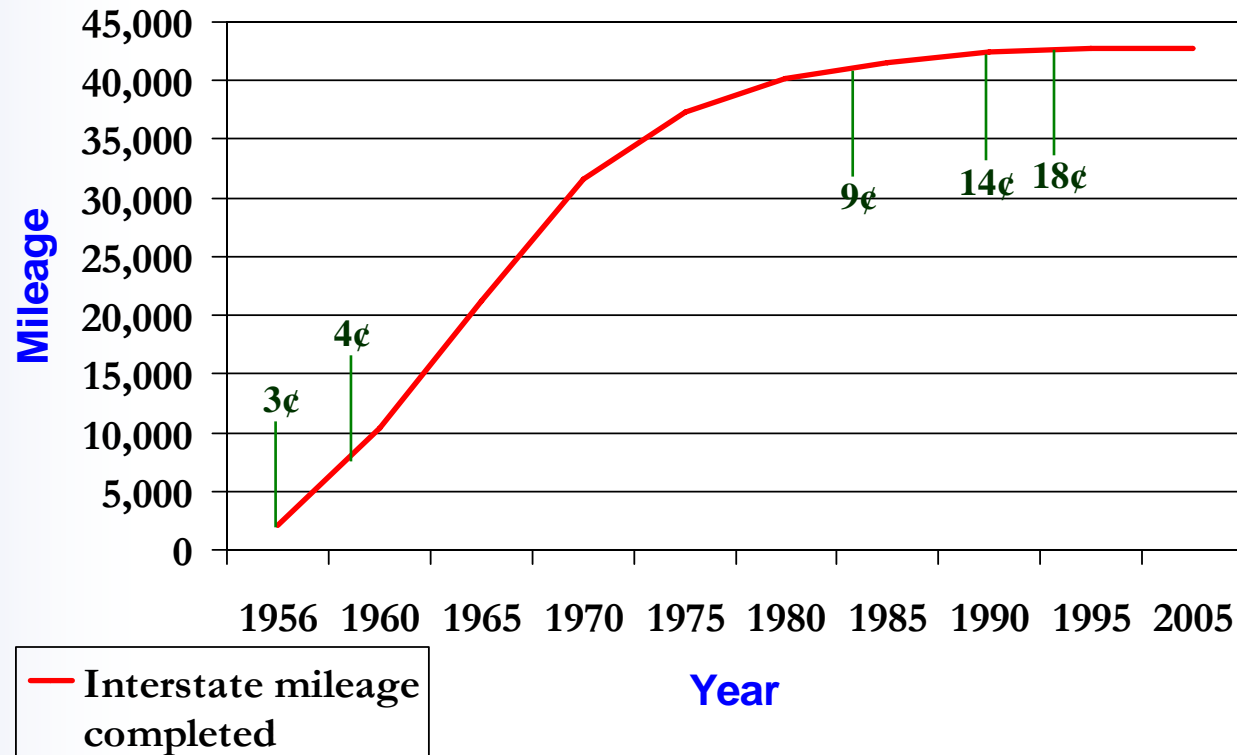


Congested Highways

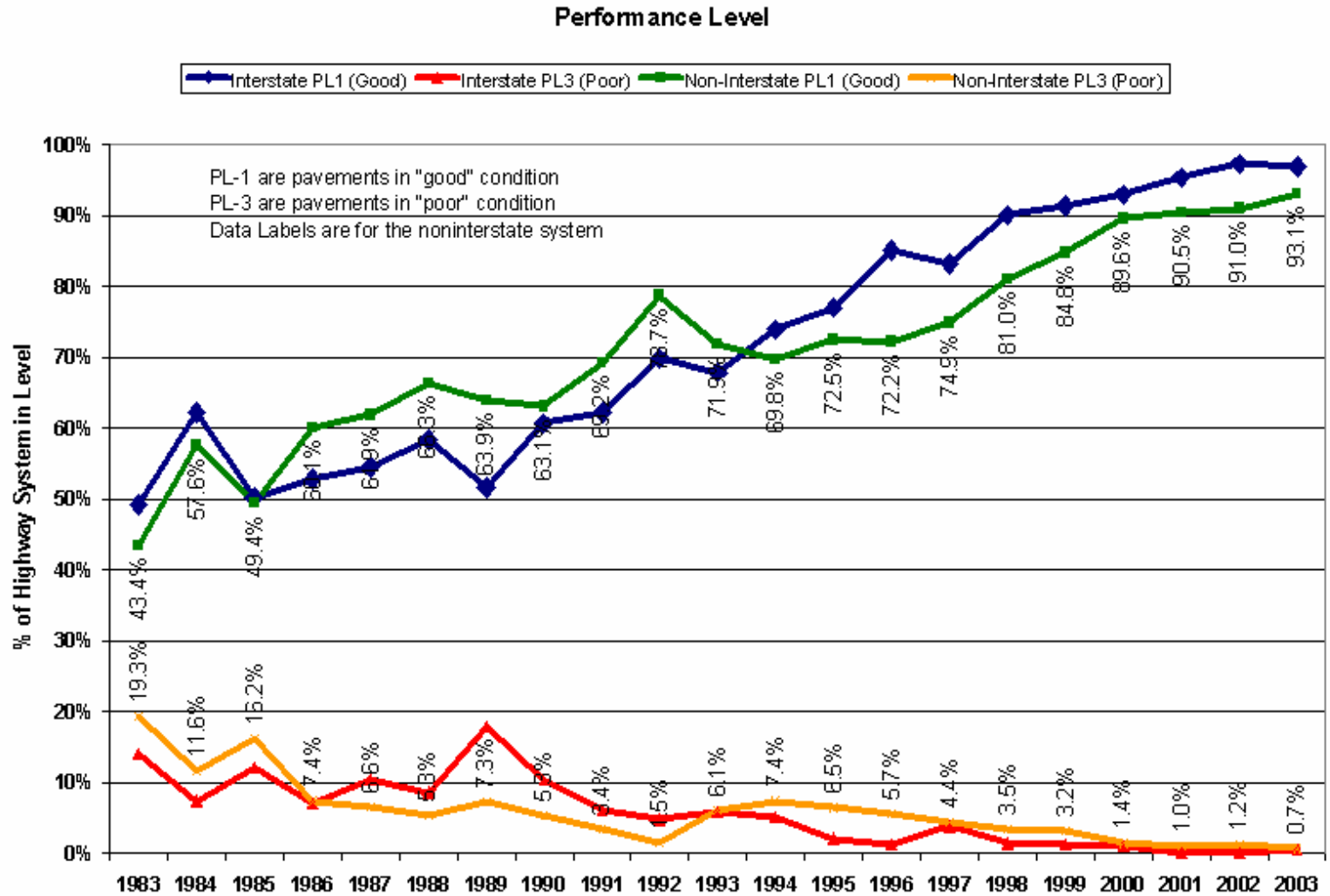
Projected Highway Congestion (Covering Both Passenger and Truck Travel) in 2020



Interstate Highway System Development and Federal Gas Tax Rate



Concrete Summit on Sustainable Development



Kansas DOT Pavement Preservation Philosophy Experience



U.S. Department of Transportation
Federal Highway Administration



FHWA Sustainability Actions

- **Context Sensitive Solutions**
- **Highways For Life Program**
- **Green Highway Partnerships**
- **Recycled Materials Resource Center**
- **Long Life Pavement Program**
- **Long Life Bridge Program**



Thank You for Your Continued Partnership!

